



# **Vermont Gas Systems**

**Don Rendall, President and CEO**

**Senate Finance Committee**

**March 2016**

# Starting with Safety

---

## **Customer**

Public awareness program and  
year-round surveys

## **Work Place**

Safety tip to start every meeting

## **Public**

Burlington survey by Google Earth/  
Environmental Defense Fund– highly sensitive  
equipment, extremely low leak detection (2014)



# About Vermont Gas

---

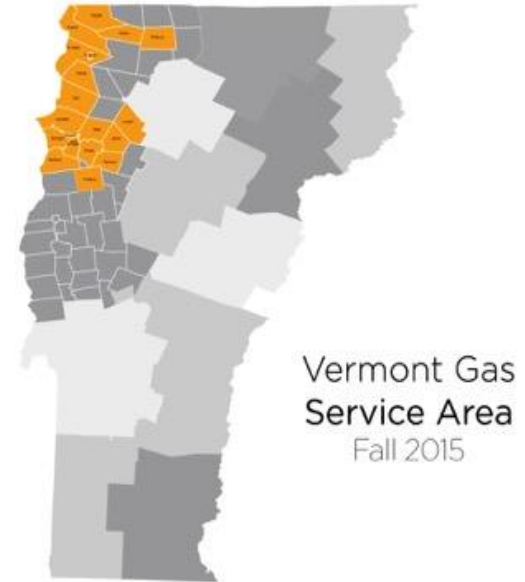
Vermont's only natural gas utility,  
with 140 employees

Established in '65, service in '66

Now serving 50,000 customers in  
Franklin & Chittenden Counties

Regulated by the Vermont Public Service Board

Expanding into Addison County



# Choice & Opportunity

---

In 2015, expanded to 1300 new homes and businesses in Colchester, Burlington, Swanton (37 miles of new distribution pipe)

In 2016: add more than 1000 new homes, 130 new businesses

A popular choice: 95% of Burlington residents who have access use gas

Annual customer survey: 94.9% customer satisfaction



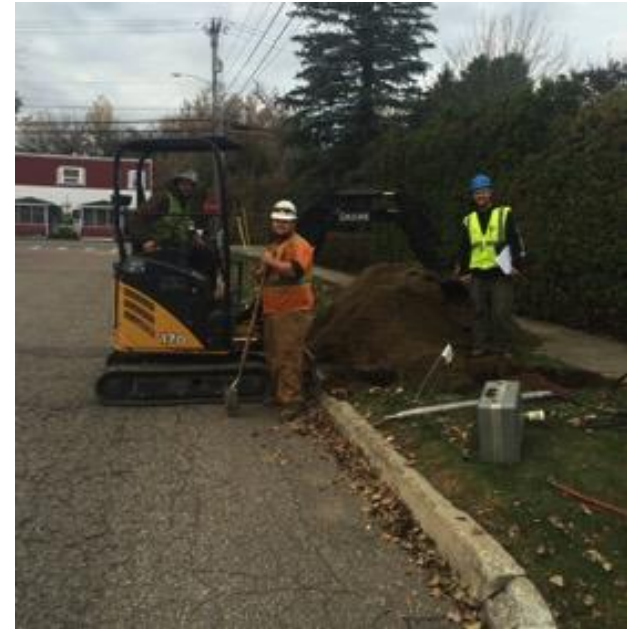
# Competitive & Affordable Rates

---

Since early 2012, our rates have decreased by more than 20%, reducing an average family's cost by \$300/yr

Residential customers who have converted to natural gas saved almost \$42M in 2015 compared to alternative heating fuels

Our company competes in the marketplace and is rate-regulated



# Nationally Recognized Efficiency Programs

---

The cheapest energy is the energy we don't use

Transition to Energy Efficiency Utility

Programs produce results:

- 30,000 participants
- Customers save \$14 million per year
- Avoid emissions equal to 3% of Vermont's cars & light trucks



# Addison Expansion Project

---

Addison County: 4,000 homes, businesses and institutions (Middlebury, Vergennes, Bristol, Monkton, New Haven)

2015 construction season productive and successful

Agreement with 98% of landowners

Preparing for 2016 mainline construction





# Vermont's Clean Energy Future

---

Natural gas – among the fastest available clean energy options available in Vermont, which is highly dependent on higher-emitting fuels (second-lowest gas use after Hawaii)

According to the Vermont energy plan (2016), 12% of Vermont households heat with natural gas. This compares to about 50% nationwide (US Dept. of Energy)

In Chittenden and Franklin counties alone, customers who have converted from oil and propane prevented 191,000 tons of greenhouse gas emissions in the past year

